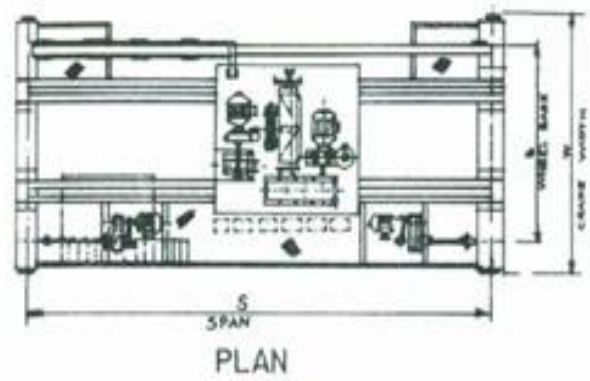
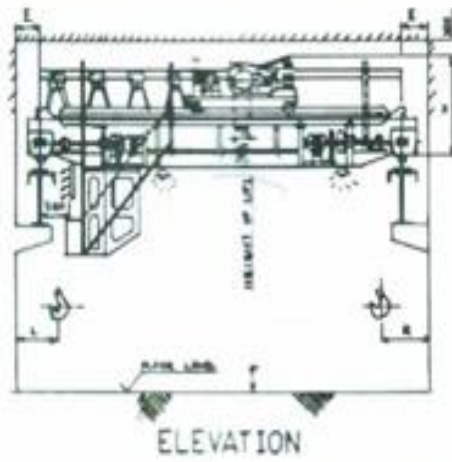


## Double Girder EOT Cranes



CAPACITY TONNES	SPAN MTRS S	HEAD ROOM MM H	HOOK APPROACH MM		END CLEARANCE MM E	CRANE WIDTH MM W	WHEEL BASE MM B	L.T. WHEEL LOAD TONNES (APROX)	CRANE WT. TONNES E
			L	R					
3	10.5	1600	900	750	250	5100	4200	4.40	10.10
	13.5	1600	900	750	250	5100	4200	4.70	11.40
	16.5	1600	950	750	250	5100	4200	5.20	13.40
	19.5	1600	1000	750	250	5100	4200	5.50	14.70
	22.5	1600	1200	750	250	5100	4200	6.30	17.90
	25.5	1700	1300	750	250	5800	5100	6.80	19.90
5	10.5	1650	950	850	250	5100	4200	5.30	10.50
	13.5	1650	950	850	250	5100	4200	5.70	11.80
	16.5	1750	950	850	250	5100	4200	6.10	13.70
	19.5	1750	1000	850	250	5100	4200	6.50	15.10
	22.5	1750	1200	850	250	5100	4200	7.40	18.80
	25.5	1800	1300	850	250	5800	5100	7.90	20.50
7.5	10.5	1700	1000	900	250	5800	4800	6.80	11.40
	13.5	1700	1000	900	250	5800	4800	7.10	12.70
	16.5	1800	1000	900	250	5800	4800	7.70	15.00
	19.5	1800	1000	900	250	5800	4800	8.50	18.30
	22.5	1800	1200	900	250	5800	4800	8.80	19.20
	25.5	18.50	1300	900	250	6100	5100	9.70	23.10
10	10.5	1800	1100	900	250	5800	4800	8.50	13.10
	13.5	1800	1100	900	250	5800	4800	9.00	14.70
	16.5	1900	1100	900	250	5800	4800	9.70	17.60
	19.5	2000	1100	900	250	5800	4800	10.30	19.90
	22.5	2000	1200	900	250	5800	4800	11.00	22.70
	25.5	2000	1300	900	250	6100	5100	12.00	26.90
15	10.5	2000	1150	950	250	5800	4800	12.00	16.40
	13.5	2000	1150	950	250	5800	4800	12.60	18.30
	16.5	2100	1150	950	250	5800	4800	13.30	21.20
	19.5	2100	1150	950	250	5800	4800	14.00	23.90
	22.5	2200	1250	950	300	5800	4800	14.80	27.30
	25.5	2200	1350	950	300	6100	5100	15.70	31.20
20	10.5	2200	1250	1000	300	5800	4800	14.70	17.70
	13.5	2200	1250	1000	300	5800	4800	15.20	19.90
	16.5	2400	1250	1000	300	5800	4800	15.90	22.70
	19.5	2400	1250	1000	300	5800	4800	16.80	26.20
	22.5	2500	1250	1000	300	5800	4800	17.70	29.90
	25.5	2500	1350	1000	300	6300	5300	19.20	35.90
25	10.5	2400	1300	1050	300	6100	5200	18.20	19.80
	13.5	2600	1300	1050	300	6100	5200	18.70	21.80
	16.5	2700	1300	1050	300	6100	5200	19.90	26.60
	19.5	2700	1300	1050	300	6100	5200	20.60	29.30
	22.5	2700	1300	1050	300	6100	5200	21.70	33.90
	25.5	2750	1400	1050	300	6300	5300	22.70	37.90

**NOTE :**

- Above specifications are for Class II Duty Cranes as per IS-807 & ISS IS 3177 - 1977 (Revised) & 800.
- Dimensions detailed above are based on standard 10 metres height of lift.
- Specification for cranes above 25 ton capacity can be provided on request.
- The above specification are our standard. Exact specifications to suit customer requirement can be provided against specific enquiry.
- Due to continuous design improvements dimensions are subject to change without notice.
- We can supply central drive as per requirement.
- We can supply Class IV duty cranes.